

APPENDIX 9:

CORRECTIVE ACTION ASSESSMENT WELL SCHEMATICS

“CTV II” STORAGE PROJECT

The following schematics provide depictions of the well(s) included in the Corrective Action Assessment in Attachment B: Area of Review and Corrective Action Plan. The Wellbore Diagrams illustrate the current condition of the well(s) along with the proposed corrected configuration required to isolate the injection zone associated with CTV II project.

Injection zone as well as corrective intervals have been indicated to illustrate required corrections. Proposed abandonment configurations show proposed cement plug depths to ensure confinement and non-endangerment of USDW.

MD (TVD)
0

1,000

2,000

3,000

4,000

5,000

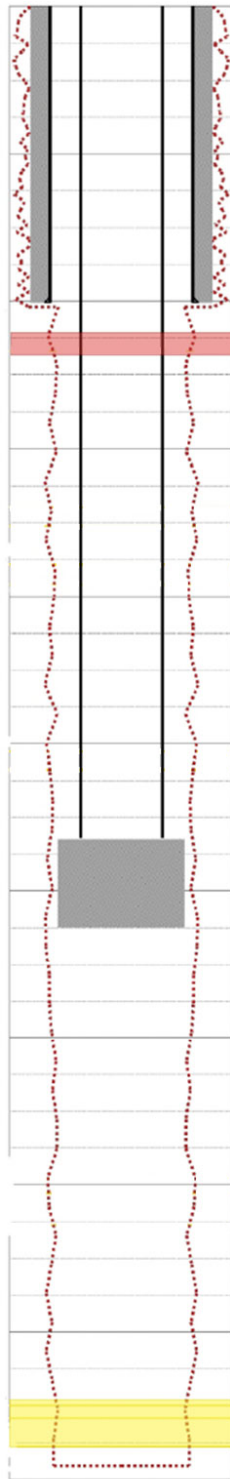
6,000
(5,999)

7,000
(6,998)

8,000
(7,996)

9,000
(8,990)

10,000
(9,982)



Current Configuration

The Brooks 10-1 original hole was sidetracked by setting a cement plug from 5,648 – 6,246 feet MD, and the well was suspended with drilling mud below the plug. CTV will re-abandon the well and ensure isolation of the injection zone. CTV plans to re-enter the section of the well beneath the plug from approximately 5,700 – 6,500 feet MD, clean out the original openhole as deep as possible, and fill the well with Class G cement plug(s) to ensure isolation.

Notes:

■ Cement

— Casing

... Hole

Drawing is not to scale

CTV = Carbon TerraVault Holdings LLC

MD = Measured Depth (feet)

TVD = True Vertical Depth (feet)

USDW = underground source of drinking water

MD (TVD)
0

1,000

2,000

3,000

4,000

5,000

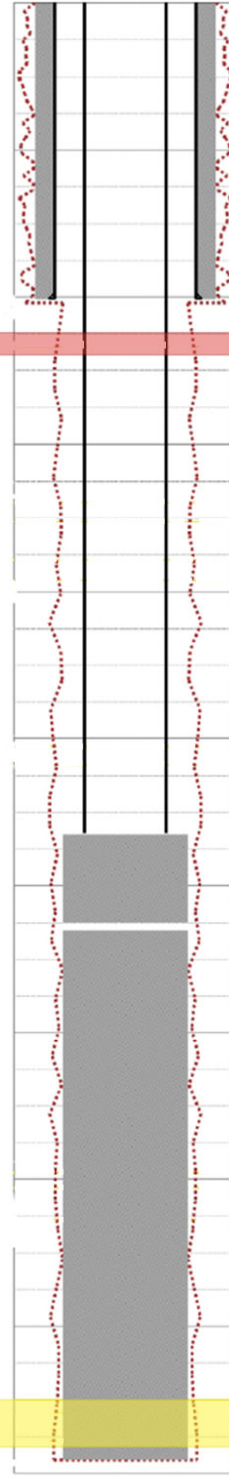
6,000
(5,999)

7,000
(6,998)

8,000
(7,996)

9,000
(8,990)

10,000
(9,982)



Corrective Action

Injection Zone

MD (TVD)
0

1,000

2,000

3,000
(2,974)

4,000
(3,866)

5,000
(4,755)

6,000
(5,644)

7,000
(6,540)

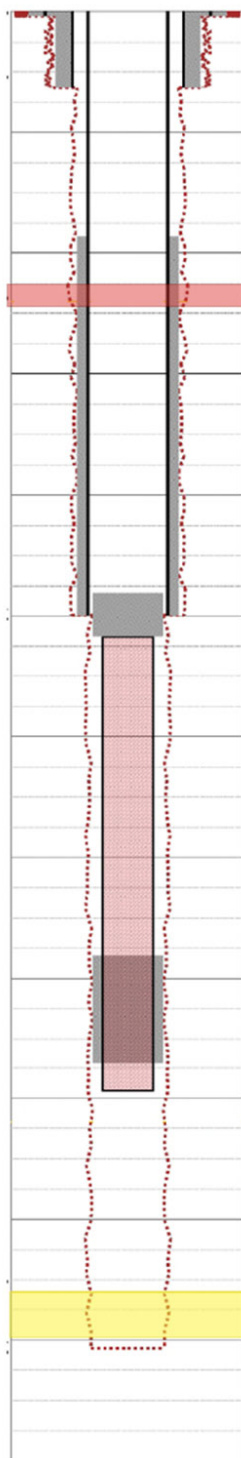
8,000
(7,432)

9,000
(8,338)

10,000
(9,238)

11,000
(10,127)

12,000
(11,043)



Current Configuration

The Pool B1 original hole was sidetracked by setting a cement plug from 4,809 – 5,166 feet MD, and the drill pipe fish was cemented in place from 7,810 – 8,708 feet MD. CTV will re-abandon the well and ensure isolation of the injection zone. CTV plans to re-enter the section of the well beneath the fish, clean out the original openhole as deep as possible, and fill the well with Class G cement plug(s) to ensure isolation.

Notes:

■ Cement

■ Drill Pipe Fish

— Casing

... Hole

Drawing is not to scale

CTV = Carbon TerraVault Holdings LLC

MD = Measured Depth (feet)

TVD = True Vertical Depth (feet)

USDW = underground source of drinking water

MD (TVD)
0

1,000

2,000

3,000
(2,974)

4,000
(3,866)

5,000
(4,755)

6,000
(5,644)

7,000
(6,540)

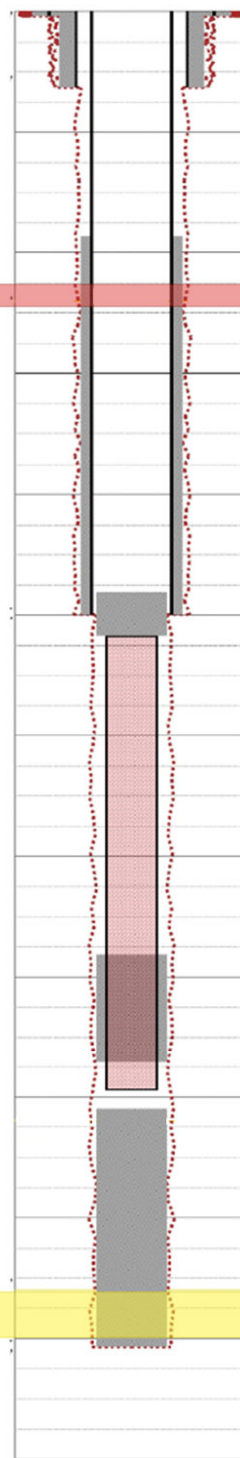
8,000
(7,432)

9,000
(8,338)

10,000
(9,238)

11,000
(10,127)

12,000
(11,043)



Corrective Action

USDW

Injection Zone

